

SLOECC ARES®/RACES Training Plan

Training Module: Section 5.4.7.
Use packet radio and Winlink to send digital
messages.

Training Plan: Skills-based Task

- 5.4.7. Use packet radio and Winlink to send digital messages.
 - Demonstrate programming of digital frequencies into radio
 - Demonstrate the log on, boot up and opening of Paclink and Thunderbird
 - Demonstrate the log on, boot up and opening of RMS Express
 - Demonstrate connection to digipeater, peer-to-peer, and simple terminal packet
 - Successfully send and receive packet messages

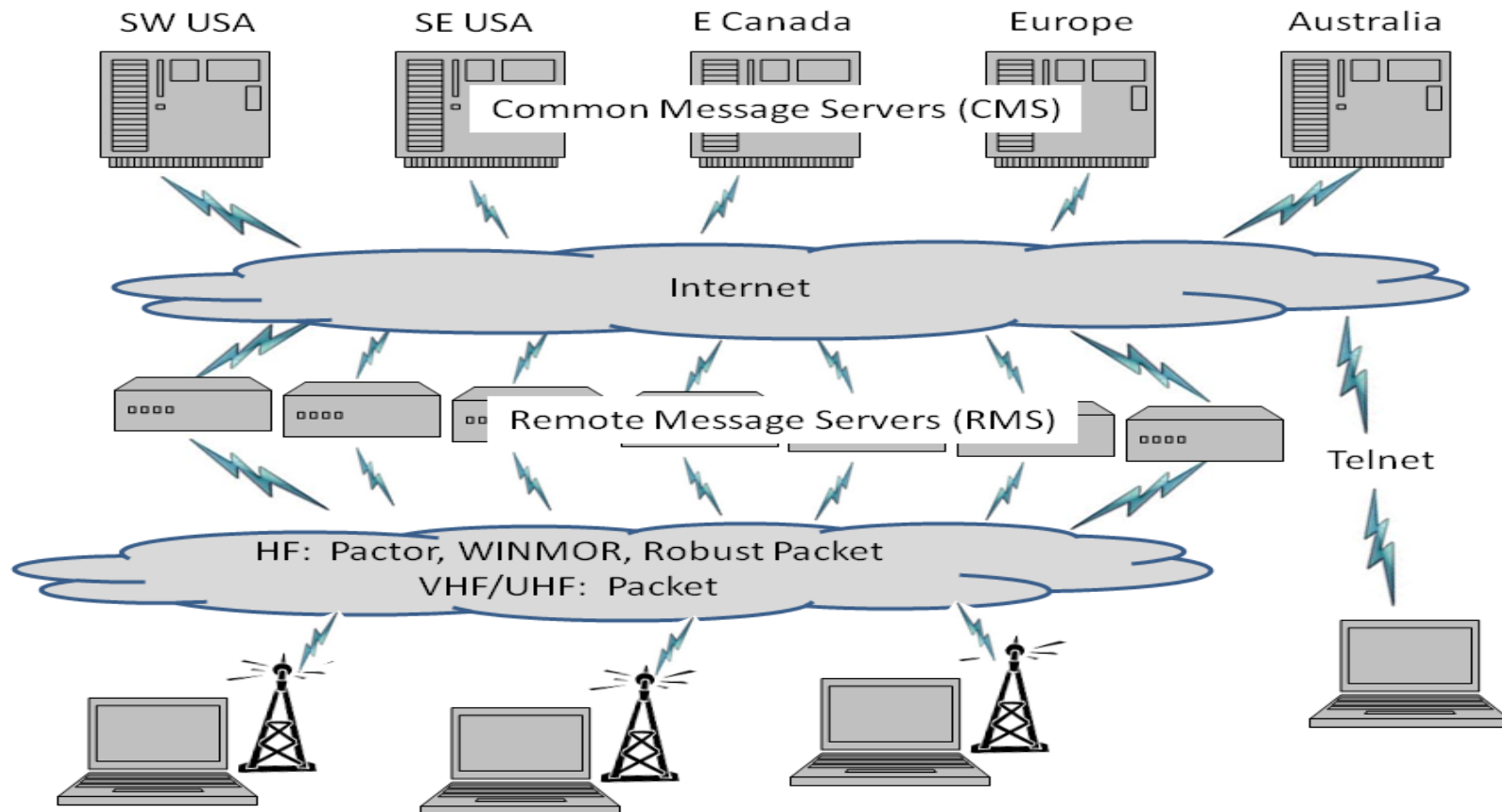
What is Packet Radio & Importance in Emergencies

- **Packet radio** is a form of packet switching technology used to transmit digital data via radio or wireless communications links.
- It uses the same concepts of data transmission that are fundamental to communications via the internet.
- Packet radio is used in emergencies to:
 - pass a message accurately (especially long messages such as lists)
 - pass a message to multiple recipients simultaneously
 - offers more privacy than voice communications
 - provides automatic record of message
 - allows a message to be printed

What is required to set up a Winlink Packet Station

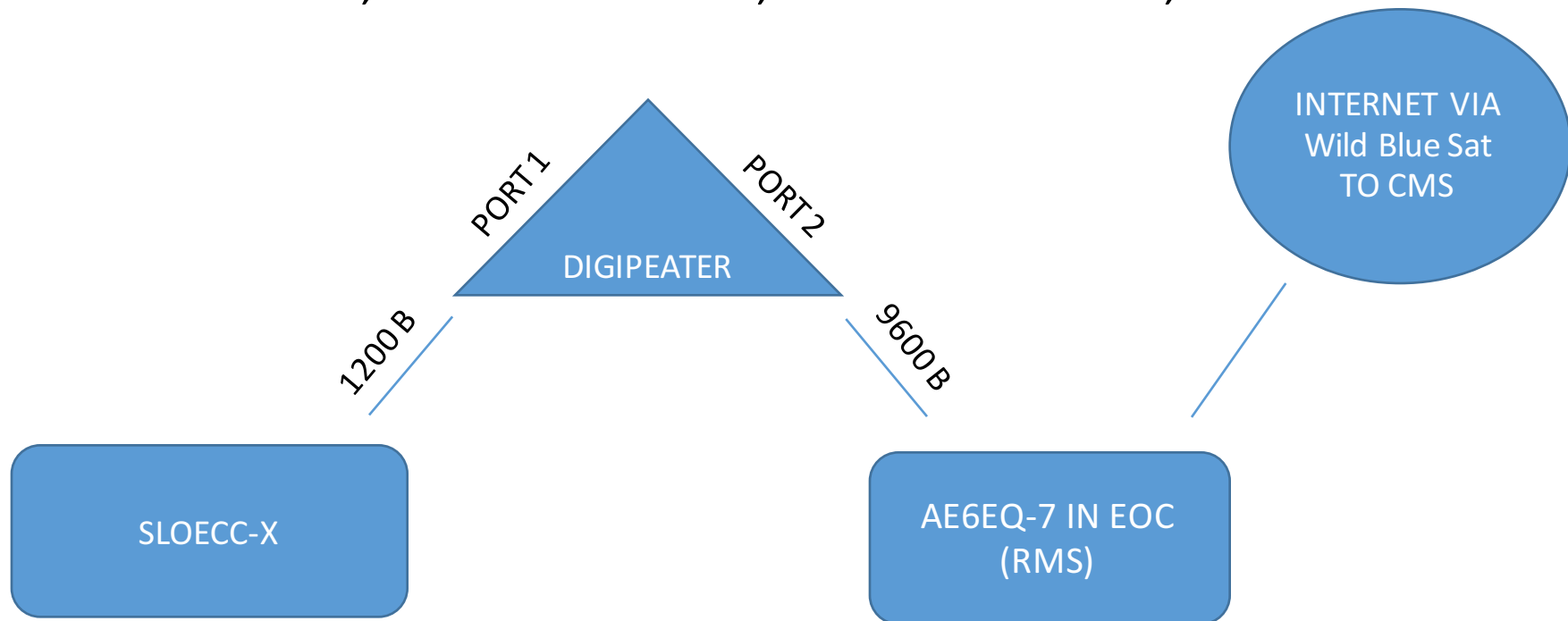
- Windows Computer (sorry Mac users!) and printer
- Winlink Software (Packlink-Thunderbird or Winlink Express aka RMS Express)
- Terminal Node Controller (TNC) with serial/USB cable to computer
- Cable to Radio with digital in/output port (programming port)
- VHF radio, power supply, cable, antenna

Winlink System for E-Mail (overview)



SLO County Digipeaters and Winlink

- TASS 145.070, SIMEON 145.010, NIPOMO 145.050, BLACK 145.090



Winlink Addresses for SLO County

EOC	SLOEOC-1 or SLOEOC-1@winlink.org
ECC-5	SLOECC-5 or SLOECC-5@winlink.org
ECC-8	SLOECC-8 or SLOECC-8@winlink.org
ECC-11	SLOECC-11 or SLOECC-11@winlink.org
ECC-12	SLOECC-12 or SLOECC-12@winlink.org
ECC-14 (Portable Packet)	SLOECC-14 or SLOECC-14@winlink.org

Packlink Used at EOC & ECCs

Winlink Express Recommended Everywhere Else

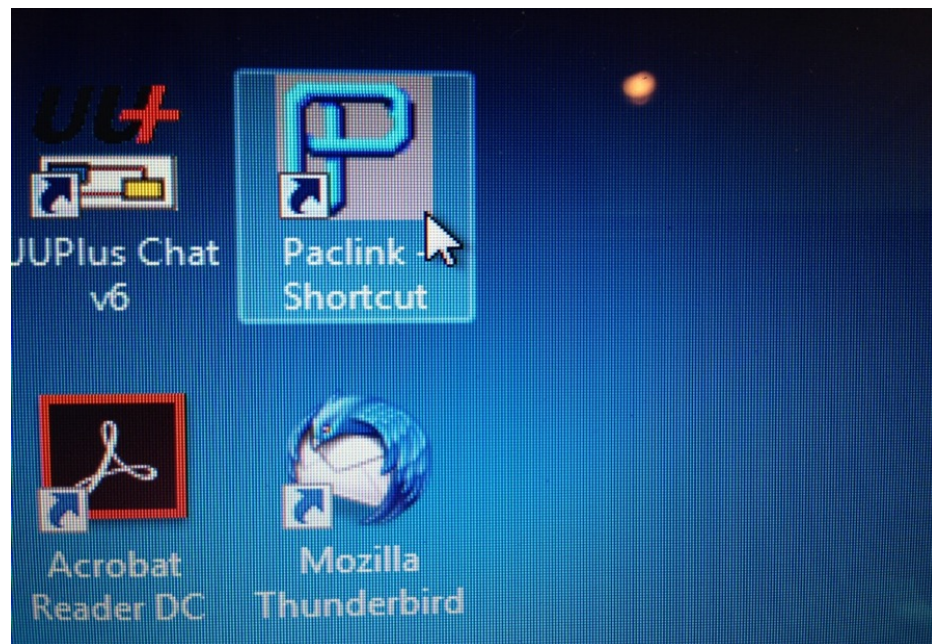
- Packlink still available on Winlink.org web site
- However, Packlink has not been upgraded since 2009
- Does not have .ini files for all TNCs especially new ones
- Does not support KISS mode TNCs
- Winlink Express recommended for individuals and new installations

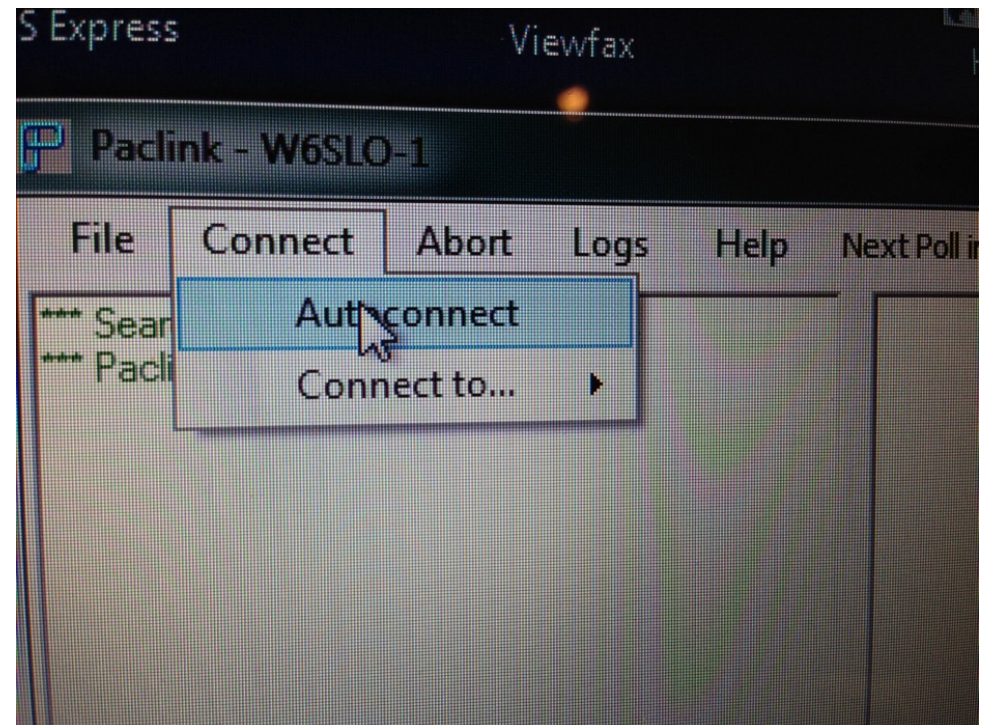
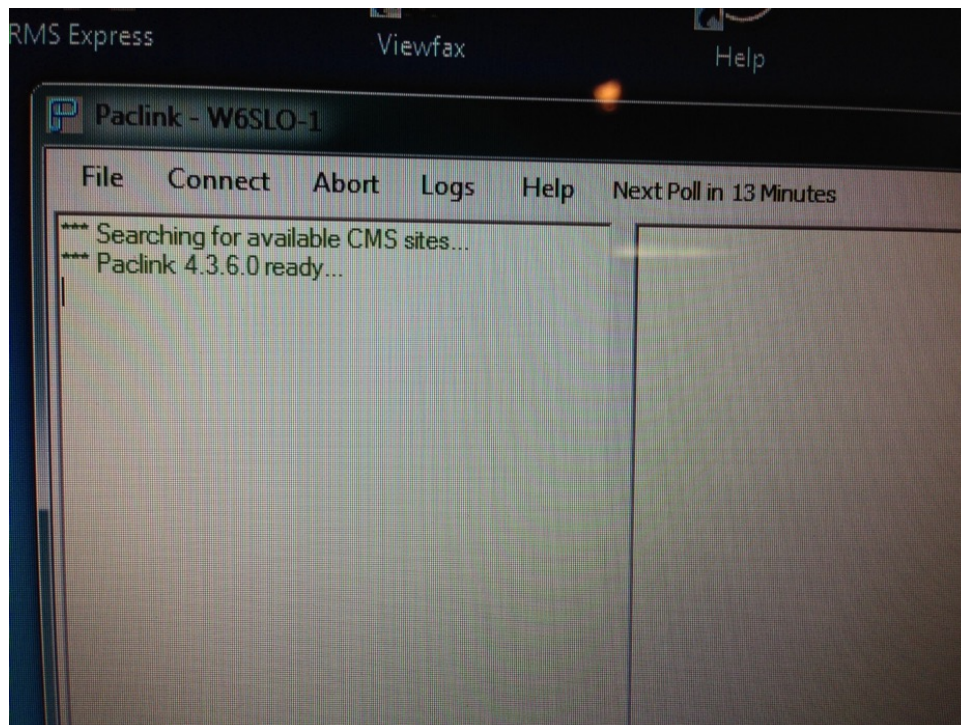
Packlink/Thunderbird Step by Step

1. Turn on computer and log on
2. Turn on radio and TNC – set appropriate digipeater frequency/channel on radio
3. Open Packlink, Open Thunderbird
4. When Packlink finishes its initialization it says READY
5. Click CONNECT, On drop down menu click AUTOCONNECT
6. Look for connection to digipeater
7. Look for connection to AE6EQ-7
8. Look for connection to CMS server
9. On Thunderbird click GET MESSAGES – any mail will be delivered to inbox
10. On Thunderbird click WRITE – write your e-mail.
11. Subject Line must start with //WL2K P/ (subject line)
12. On Thunderbird click SEND
13. During emergency, Reset Packlink Polling Interval to 5-10 min in FILES

Winlink Message Precedence Categories

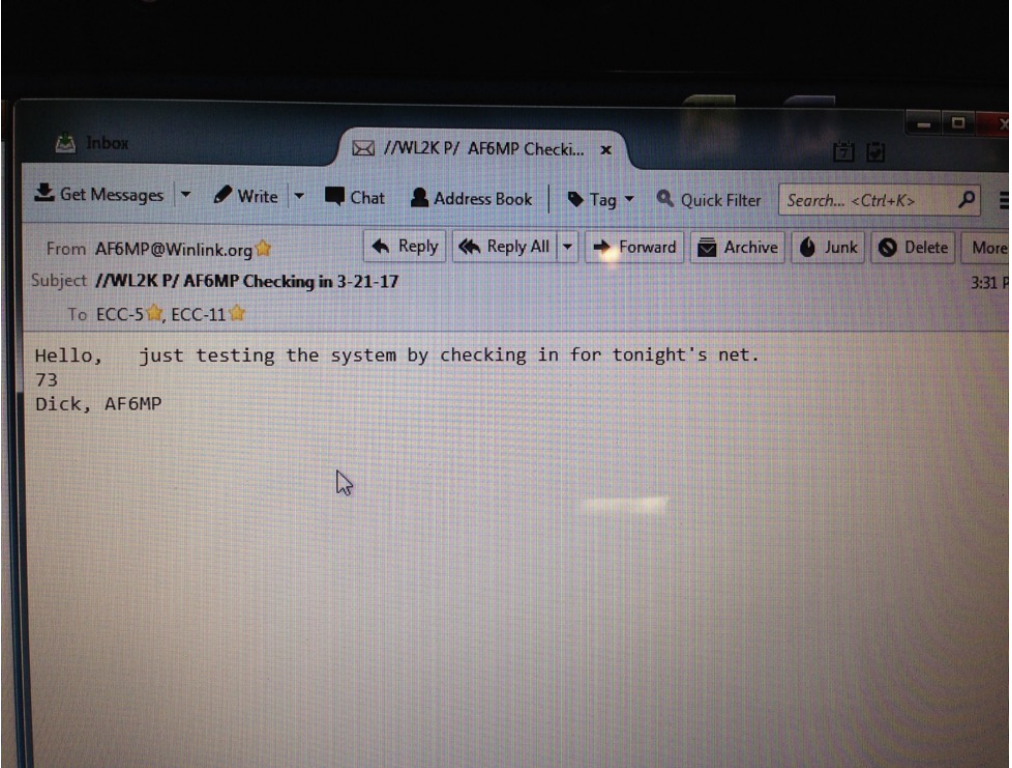
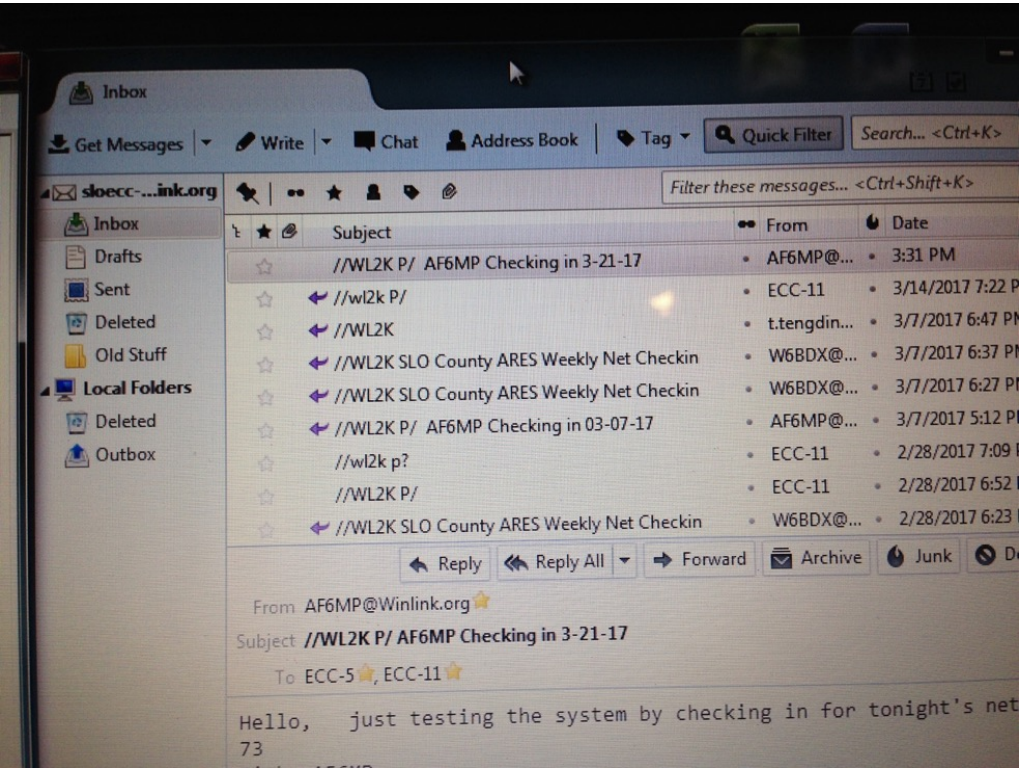
- Precedence categories are Flash (Z), Immediate (O), Priority (P), and Routine (R).
- The precedence indicator is included in a Winlink message by adding one of the following to the beginning of the subject line in a message whether originated from Internet email or within the Winlink system.
- //WL2K Z/ - Flash (for urgent message use only)
- //WL2K O/ - Immediate (for urgent message use only)
- //WL2K P/ - Priority
- //WL2K R/ - Routine (Default) or just //WL2K/
- On the receiving end, recipients reacting to messages with Reply, Reply to All and Forward will create messages that are treated with the same priority as the original unless the precedence indicated in the subject line is edited when replying or forwarding.



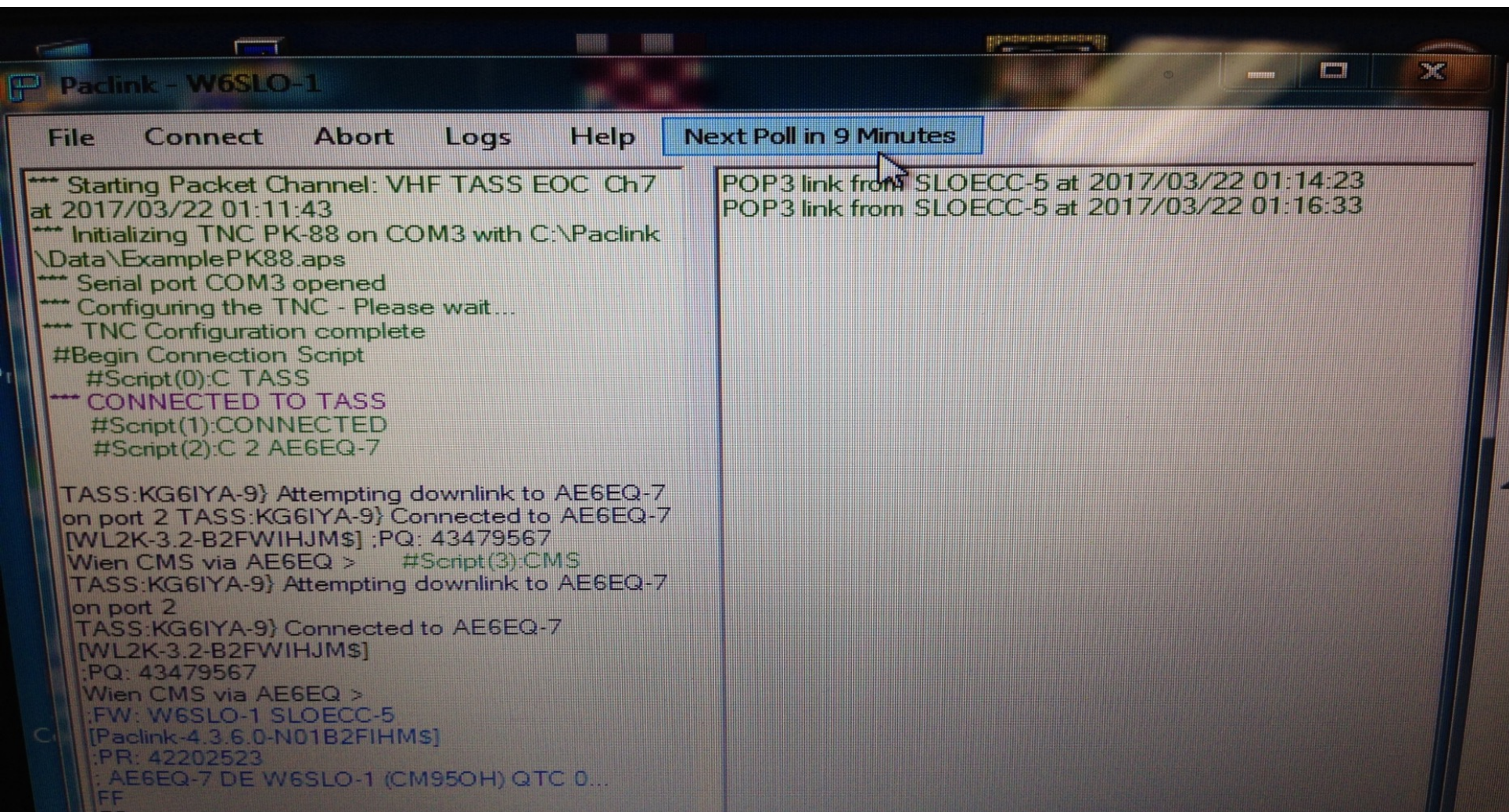



```
--- Serial port COM3 opened
--- Configuring the TNC - Please wait...
--- TNC Configuration complete
#Begin Connection Script
#Script(0):C TASS
--- CONNECTED TO TASS
#Script(1):CONNECTED
#Script(2):C 2 AE6EQ-7

TASS:KG6IYA-9} Attempting downlink to AE6EQ-7
on port 2 TASS:KG6IYA-9} Connected to AE6EQ-7
[WL2K-3.2-B2FWIHJM$] ;PQ: 43479567
Wien CMS via AE6EQ > #Script(3):CMS
TASS:KG6IYA-9} Attempting downlink to AE6EQ-7
on port 2
TASS:KG6IYA-9} Connected to AE6EQ-7
[WL2K-3.2-B2FWIHJM$]
;PQ: 43479567
Wien CMS via AE6EQ >
;FW: W6SLO-1 SLOECC-5
[Paclink-4.3.6.0-N01B2FIHM$]
;PR: 42202523
: AE6EQ-7 DE W6SLO-1 (CM950H) QTC 0...
FF
FQ
--- DISCONNECTED: TASS
--- Closing VHF TASS EOC Ch7 at 2017/03/22
01:12:41
--- Serial port closed
```

Dick, AF6MP 3-22-2017



Why Winlink Express is Recommended

- Secure login now required (security feature)
- Winlink Express Registration:
 - Optional but \$24 Registration donation helps offset real operating costs. Prior WINMOR (HF) registration is OK.
- Email program is integral (modeled after Outlook)
- Updated Frequently (several times per month)
- Has both VHF Packet and HF Packet modes (Pactor/WINMOR)
- Allows Peer-to-Peer messaging (P2P)
- Has Forms and Templates for message use
- All TNCs including KISS mode supported
- Radio support for most HF rigs via USB

Winlink Express Step by Step

- Launch Winlink Express
- Select Packet Winlink
- Select Messages, New Message
- Write new message – Subject line starts //WL2K P/ otherwise is added automatically without the **"P" = *priority***
- Post message to OUTBOX
- Select OPEN SESSION (Causes initialization of TNC)
- When "Ready" appears, Select START
- Outgoing messages sent, incoming messages received and placed in INBOX
- Click on Message to read, reply, or print
- Close each window to exit

Winlink Express 1.5.0.0 - AF6MP

AF6MP

Settings

Message

Attachments

Move To: Saved Items

Delete

Open Session: Packet Winlink

Logs

Help

No active session...

System Folders

Inbox (0 unread)

Read Items (0)

Outbox (1)

Sent Items (20)

Saved Items (0)

Deleted Items (0)

Drafts (0)

Personal Folders

Global Folders

ICS Template (2)

Contacts

Date/Time	Message ID	Size	Source	Sender	Recipient	Subject
2017/01/04 03:06	JRKVF33PTKEO	318	W6SLO-2	SLOECC-11	AF6MP	//WL2K r/ re checkin
2016/11/30 02:18	R0E5RBUXV4YU	335	W6SLO-1	SLOECC-5	AF6MP	//WL2K / re: AF6MP checking in 11-29-16
2016/11/23 03:11	09LAWD26PY32	346	W6SLO-2	SLOECC-11	AF6MP	//WL2K P/ AF6MP Checking in 11-15-16 re:
2016/11/23 02:18	ICRTY3B5H0OU	390	W6SLO-1	SLOECC-5	AF6MP	//WL2K / AF6MP checking in 11-22-2016
2016/11/16 03:15	231OG270TUT2	373	W6SLO-1	SLOECC-5	AF6MP...	//WL2K P/ AF6MP Checking in 11-15-16
2016/11/16 03:01	K252JVQ7F6UI	346	W6SLO-1	SLOECC-5	AF6MP...	//WL2K P/ AF6MP Checking in 11-15-16
2016/11/06 08:31	BNLAYAX5IXVC	1313	SYSTEM	WEBMASTER	AF6MP	[Winlink Global Radio Email] Account inactivity
2016/10/26 02:27	3US6FS9OV9C0	343	W6SLO-2	SLOECC-11	AF6MP	//WL2K P/ AF6MP checking in 10-25-2016
2016/10/26 02:23	X342EWQ28784	335	W6SLO-1	SLOECC-5	AF6MP	//WL2K P/ AF6MP checking in 10-25-2016
2016/10/19 02:05	AL4YVTY1QHY	300	W6SLO-1	SLOECC-5	AF6MP	//WL2K P/ AF6MP Checking in 10-18-2016
2016/09/28 02:11	9G238BTXEI0S	335	W6SLO-2	SLOECC-11	AF6MP	//WL2K P/ AF6MP Checking in 9-27-16
2016/09/21 02:31	Z72KYALRC7WH	284	W6SLO-2	SLOECC-11	AF6MP	//WL2K ??WL2K P/ Checking in 9-1316
2016/09/21 02:14	U22LJY777YMI	317	W6SLO-1	SLOECC-5	AF6MP	//WL2K / Testing the winlink
2016/09/15 05:07	NVBS168RC5FK	198	KA9A	KA9A	AF6MP	//WL2K trying to set up a laptop
2016/09/14 01:56	6CL21UXGQTVN	302	W6SLO-1	SLOECC-5	AF6MP	//WL2K ??WL2K P/ Checking in 9-1316
2016/08/31 02:10	WA8SAAN5ZUFA	334	W6SLO-2	SLOECC-11	AF6MP	//WL2K P/ AF6MP Checking in 8-30-16
2016/08/31 02:07	UVM2ROSO9Z0J	302	W6SLO-1	SLOECC-5	AF6MP	//WL2K P/ AF6MP Checking in 8-30-16
2016/08/17 02:31	1V5ZGK9YTJO1	320	W6SLO-1	SLOECC-5	AF6MP	//WL2K / AF6MP checking in 8-16-16
2016/08/17 02:29	1YWGMTEQMH...	345	W6SLO-2	SLOECC-11	AF6MP	//WL2K / AF6MP checking in 08-09-2016
2016/08/17 02:19	ZCARQR4IXTX6	334	W6SLO-2	SLOECC-11	AF6MP	//WL2K / AF6MP checking in 8-16-16

Message ID: PC0BAS36SUIL

Date: 2016/05/28 14:37

Search the web and Windows

2:41 PM

3/10/17

Dick, AF6MP 3-22-2017

18

Winlink Express 1.5.0.0 - AF6MP

AF6MP Settings Message Attachments Move To: Saved Items Delete Open Session: Packet Winlink Logs Help

No active session...

Enter a new message

Close Select Template Attachments Post to Outbox Spell Check Save in Drafts

From: AF6MP ☒ Winlink Message ☐ Peer-to-Peer Message ☐ Request read receipt

To: SLOEOC-1;

Cc:

Subject: //WL2K P/ AF6MP testing system after reboot at EOC

Attach:

Hi John, this is a test message to see that all is working at EOC.
73
Dick, AF6MP

	Message ID	Size	Source	Sender
06	JRKVF33PTKEO	318	W6SLO-2	SLOECC-11
18	R0E5RBUXV4YU	335	W6SLO-1	SLOECC-5
11	09LAWD26PY32	346	W6SLO-2	SLOECC-11
18	ICRTY3B5H00U	390	W6SLO-1	SLOECC-5
15	231OG270TUT2	373	W6SLO-1	SLOECC-5
01	K252JVQ7F6UI	346	W6SLO-1	SLOECC-5
31	BNLAYAX5IXVC	1313	SYSTEM	WEBMASTER
27	3US6FS9OV9C0	343	W6SLO-2	SLOECC-11
23	X342EWQ28784	335	W6SLO-1	SLOECC-5
05	AL4YVTYM1QHY	300	W6SLO-1	SLOECC-5
11	9G238BTXEI0S	335	W6SLO-2	SLOECC-11
31	Z72KYALRC7WH	284	W6SLO-2	SLOECC-11
14	U22LJY777YMI	317	W6SLO-1	SLOECC-5
07	NVBS168RC5FK	198	KA9A	KA9A
56	6CL21UXGQTVN	302	W6SLO-1	SLOECC-5
10	WA8SAAN5ZUFA	334	W6SLO-2	SLOECC-11
07	UVM2ROSO9Z0J	302	W6SLO-1	SLOECC-5
31	1V5ZGK9YTJO1	320	W6SLO-1	SLOECC-5
29	1YWGMTEQMH...	345	W6SLO-2	SLOECC-11
10	70AF084VTVS	334	W6SLO-2	SLOECC-11
	OBAS36SUIL			

ICS Template (2)

Search the web and Windows

2:55 PM 3/10/17

Dick, AF6MP 3-22-2017

Winlink Express 1.5.0.0 - AF6MP

AF6MP

Settings

Message

Attachments

Move To: Saved Items

Delete

Open Session: Packet Winlink

Logs

Help

In Packet Winlink session.

Inbox (2 unread)

Read Items (0)

Outbox (0)

Sent Items (22)

Saved Items (0)

Deleted Items (0)

Drafts (0)

ICS Template (2)

Packet Winlink Session

Exit

Setup

Switch to Peer-to-Peer Session

Channel Selection

1200 Baud

Start

Stop

Connection type: Script

Via

Connection script: TASS-AE6EQ-7

Edit script

Add script

Remove script

Received: 828

Sent: 837

Time to next Autoconnect = Disabled

*** Starting to call

*** Attempting to open packet script: C:\RMS Express\AF6MP\Scripts_WL2K\TASS-AE6EQ-7.txt

*** Starting connection script with 4 connect/response lines and 0 command lines.

*** Initial connection node for packet script is TASS

*** Opening serial port COM3; 19200 baud; TinyTracker 4

*** Connecting to TASS

*** Connected to TASS at 2017/03/10 23:01:53

*** Looking for 'CONNECTED' in: TASS:KG6IYA-9) ATTEMPTING DOWNLINK TO AE6EQ-7 ON PORT 2

CONNECTED

*** Found connection response: CONNECTED

*** Sending script line 3: C 2 AE6EQ-7

C 2 AE6EQ-7

*** Looking for 'CONN' in: TASS:KG6IYA-9) ATTEMPTING DOWNLINK TO AE6EQ-7 ON PORT 2

*** Unable to find connection response: CONN

*** Looking for 'CONN' in: TASS:KG6IYA-9) ATTEMPTING DOWNLINK TO AE6EQ-7 ON PORT 2

TASS:KG6IYA-9) CONNECTED TO AE6EQ-7

*** Found connection response: CONNECTED TO AE6EQ-7

*** End of connection script

TASS:KG6IYA-9) Connected to AE6EQ-7

[WL2K-3.2-B2FWIHJMS]

:PQ: 71512148

Perth CMS via AE6EQ >

:FW: AF6MP

[RMS Express-1.5.0.0-B2FHMS]

:PR: 02459862

: 2 DE AF6MP (CM95NJ)

:PM: SLOECC-5 F3H9FTJKW0K3 187 AF6MP //WL2K P/ AF6MP Checking in 03-07-17

:PM: SLOECC-1 GJESQLZNB01Q 219 AF6MP //WL2K P/ AF6MP testing system after reboot at EOC

FC EM F3H9FTJKW0K3 222 187 0

FC EM GJESQLZNB01Q 256 219 0

F> F2

EOC-1 AF6MP

ECC-5 AF6MP...

C-11 AF6MP

C-5 AF6MP

C-11 AF6MP

C-5 AF6MP

C-5 AF6MP...

C-5 AF6MP...

ASTER AF6MP

C-11 AF6MP

C-5 AF6MP

C-5 AF6MP

C-11 AF6MP

C-11 AF6MP

C-5 AF6MP

AF6MP

C-5 AF6MP

C-11 AF6MP

C-5 AF6MP

C-5 AF6MP

C-11 AF6MP

C-11 AF6MP

C-5 AF6MP

C-5 AF6MP

C-5 AF6MP

M AF5NG...

Search the web and Windows

3:19 PM

3/10/17

Dick, AF6MP 3-22-2017

20

AF6MP

Settings

Message

Attachments

Move To: Saved Items

Delete

Open Session: Packet Winlink

Logs

Help

No active session.

System Folders

Inbox (0 unread)

Read Items (0)

Outbox (0)

Sent Items (22)

Saved Items (0)

Deleted Items (0)

Drafts (0)

Personal Folders

Global Folders

ICS Template (2)

Contacts

Date/Time	Message ID	Size	Source	Sender	Recipient	Subject
2017/03/01 03:46	R2BH4ZADJEU1	313	AE6EQ-7	SLOEC-1	AF6MP	//WL2K P/ AF6MP Checking in 2-28-17

R2BH4ZADJEU1 - //WL2K P/ AF6MP Checking in 2-28-17

Close Print View Attachments Reply Reply All Acknowledge Forward Delete

Message ID: R2BH4ZADJEU1

Date: 2017/03/01 03:46

From: SLOEC-1

To: AF6MP

Source: AE6EQ-7

Downloaded-from: RMS:TASS

Subject: //WL2K P/ AF6MP Checking in 2-28-17

Got it all around!

73 EOC, AF6MP

On 2/28/2017 5:08 PM, AF6MP@Winlink.org wrote:

> Testing the packet tonight after the big wind.

> 73

> Dick, AF6MP

>

>

2016/08/17 02:31

1V5ZGK9YTJ01

320

W6SLO-1

SLOECC-5

AF6MP

//WL2K / AF6MP checking in 8-16-16

2016/08/17 02:29

1YWGMTEQMH...

345

W6SLO-2

SLOECC-11

AF6MP

//WL2K / AF6MP checking in 08-09-2016

2016/08/17 02:19

ZCARQR4IXTX6

334

W6SLO-2

SLOECC-11

AF6MP

//WL2K / AF6MP checking in 8-16-16

2016/08/10 01:49

QB8TZ54MCENJ

220

W6SLO-1

SLOECC-5

AF6MP

//WL2K / AF6MP checking in 08-09-2016

2016/08/03 01:10

UE7VZDEL3VH7

317

W6SLO-1

SLOECC-5

AF6MP

//WL2K / AF6MP Checking in via VHF Packet 8-02-16

2016/07/27 02:12

CEXX51CAZ8N9

346

W6SLO-1

SLOECC-5

AF6MP

//WL2K P/ AF6MP Checking in 07-26-16

2016/05/28 14:37

PC0BAS36SUIL

1066

SYSTEM

SYSTEM

AF5NG...

//WL2K User Notice

Message ID: R2BH4ZADJEU1

Date: 2017/03/01 03:46

Search the web and Windows

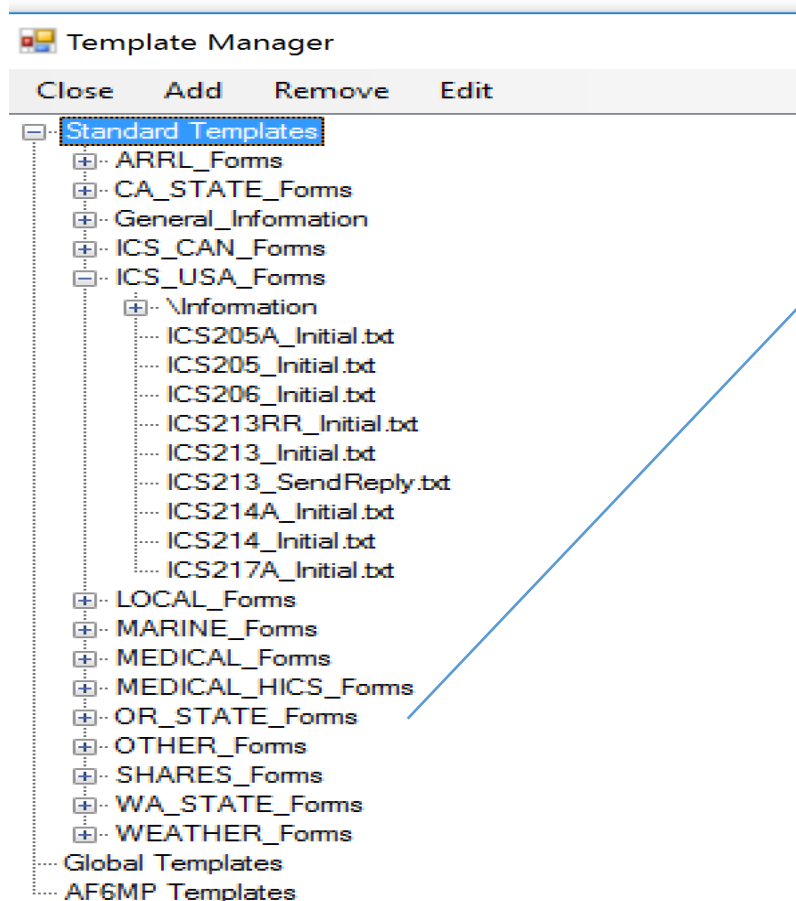
3:22 PM

3/10/17

Dick, AF6MP 3-22-2017

21

Using Forms in Winlink Express



I have enjoyed the privilege of working with n6kzb in developing the HTML forms adopted by the Oregon Office of Emergency Management for all County EOC to State level communications when phone and internet are down. We had some specific and somewhat unusual requirements so that the new forms would generate a plain text version that exactly duplicated the templates used previously. The new designs have been enthusiastically received, and will be the centerpiece of a large State-wide Simulated Emergency Test soon.

Winlink Express 1.5.1.0 - AF6MP

AF6MP Settings Message Attachments Move To: Saved Items Delete Open Session: Packet Winlink Logs Help

No active session... Enter a new message

Close Select Template ICS-213 ICS-214 Attachments Post to Outbox Spell Check

From: AF6MP Winlink Message Peer-to-Peer Message Request read receipt

To: SLOECC-5; SLOEOC-1

Cc:

Subject: ICS213 - DCPD DRILL #2 - TEST OF FORM ICS213

Attach: RMS_Express_Form_ICs213_Initial_

Tracking # [1]

1. INCIDENT NAME: DCPD DRILL #2
2. TO: NCO/ ECC-5
3. FROM: WATTS
4. SUBJECT: TEST OF FORM ICS213
5/6. DATE & TIME: 2017-03-20 14:15:40
7. MESSAGE:

ICS Template (2)

TESTING SEND OF FORM DURING CHECKIN

8. APPROVED BY: R. WATTS
POSITION & TITLE: FIELD

Is there an ADDITIONAL file or photo attached? NO (ignore the .xml file)

Source	Sender	Recipient	Subject
AE6EQ-7	SLOEOC-1	AF6MP	//WL2K P/ AF6MP Checking in 2-28-17
W6SLO-1	SLOECC-5	AF6MP...	//WL2K P/ AF6MP Checking in 2-28-17
W6SLO-2	SLOECC-11	AF6MP	//WL2K r/ re checkin
W6SLO-1	SLOECC-5	AF6MP	//WL2K / re: AF6MP checking in 11-29-16
W6SLO-2	SLOECC-11	AF6MP	//WL2K P/ AF6MP Checking in 11-15-16 re:

Tracking # None GENERAL MESSAGE ICS213 Vers 3

1. Incident Name: DCPD DRILL #2

2. To (Name/Position): NCO/ECC-5

3. From (Name/Position): WATTS

4. Subject: TEST OF FORM ICS213 5/6. Date/Time: 2017-03-20 14:23:22

7. Message:
TESTING SEND OF FORM DURING CHECKIN

8. Approved By: R. WATTS Position/Title: FIELD

Submit Reset Form Are you attaching a File or Photo to this form? NO YES If YES, then add prior to posting.

Dick, AF6MP 3-22-2017

Winlink P2P

- P2P allows one station to directly send message to another station
- Internet and RMS server station not needed for P2P
- Both stations must be running Winlink Express and be in P2P mode
- Direct connect on a simplex frequency or through Digipeater
- **Must select P2P in new message window when writing message**
- Address of message is call sign of that station
- NO //WL2K P/ in subject line
- Voice communication first on frequency is help in coordinating exchange

• ***Simple Terminal:***

- Simple Terminal is found in Help menu
- Simple Terminal (regular packet) allows group conversations
- Simple Terminal does not support KISS mode (in Packlink or Express)

Winlink Express 1.5.0.0 - AF6MP

AF6MP Settings Message Attachments Move To: Saved Items Delete Open Session: Packet P2P Logs Help

No active session.

System Folders

- Inbox (0 unread)
- Read Items (0)
- Outbox (0)
- Sent Items (22)
- Saved Items (0)
- Deleted Items (0)
- Drafts (0)

Personal Folders

Global Folders

ICS Template (2)

Contacts

Date/Time	Message ID	Size	Source	Subject
2017/03/01 03:46	R2BH4ZADJEU1	313	AE6EQ-7	//WL2K P/ AF6MP Check
2017/03/01 02:16	MR0B4U5YYBY4	317	W6SLO-1	//WL2K P/ AF6MP Check
2017/01/04 03:06	JRKVF33PTKEO	318	W6SLO-2	//WL2K r/ re checkin
2016/11/30 02:18	R0E5RBUXV4YU	335	W6SLO-1	//WL2K / re: AF6MP che
2016/11/23 03:11	09LAWD26PY32	346	W6SLO-2	//WL2K P/ AF6MP Check
2016/11/23 02:18	ICRTY3B5H0OU	390	W6SLO-1	//WL2K / AF6MP checkin
2016/11/16 03:15	2310G270TUT2	373	W6SLO-1	//WL2K P/ AF6MP Check
2016/11/16 03:01	K252JVQ7F6UI	346	W6SLO-1	//WL2K P/ AF6MP Check
2016/11/06 08:31	BNLAYAX5IXVC	1313	SYSTEM	[Winlink Global Radio Ema
2016/10/26 02:27	3US6FS9OV9C0	343	W6SLO-2 SLOECC-11	AF6MP //WL2K P/ AF6MP check
2016/10/26 02:23	X342EWQ28784	335	W6SLO-1 SLOECC-5	AF6MP //WL2K P/ AF6MP check
2016/10/19 02:05	AL4YVTYM1QHY	300	W6SLO-1 SLOECC-5	AF6MP //WL2K P/ AF6MP Check
2016/09/28 02:11	9G238BTXEI0S	335	W6SLO-2 SLOECC-11	AF6MP //WL2K P/ AF6MP Check
2016/09/21 02:31	Z72KYALRC7WH	284	W6SLO-2 SLOECC-11	AF6MP //WL2K ??WL2K P/ Che
2016/09/21 02:14	U22LJY777YMI	317	W6SLO-1 SLOECC-5	AF6MP //WL2K / Testing the winl
2016/09/15 05:07	NVBS168RC5FK	198	KA9A KA9A	AF6MP //WL2K trying to set up a l
2016/09/14 01:56	6CL21UXGQTVN	302	W6SLO-1 SLOECC-5	AF6MP //WL2K ??WL2K P/ Chec
2016/08/31 02:10	WA8SAAN5ZUFA	334	W6SLO-2 SLOECC-11	AF6MP //WL2K P/ AF6MP Check
2016/08/31 02:07	UVM2ROS09Z0J	302	W6SLO-1 SLOECC-5	AF6MP //WL2K P/ AF6MP Check
2016/08/17 02:31	1V5ZGK9YTJO1	320	W6SLO-1 SLOECC-5	AF6MP //WL2K / AF6MP checkin

Packet P2P

- Telnet Winlink
- Packet Winlink
- Pactor Winlink
- Robust Packet Winlink
- Winmor Winlink
- Iridium GO Winlink
- Packet P2P
- Pactor P2P
- Robust Packet P2P
- Winmor P2P
- Telnet P2P
- Pactor Radio-only
- Winmor Radio-only
- Telnet Radio-only
- Telnet Post Office

('Register Winmor' in the ARSFI site menu). It costs \$39 this way, but you do it

So what goes wrong with Winlink?

- Log on to computer fails! (check caps lock, capitalization, spaces)
- TNC does not respond, or initialize! (turn off TNC to reboot, check serial/USB connection, reboot computer if necessary for proper port)
- Radio not on correct channel! (Motorola Channel 07 = 145.070 TASS)
- Failure to put “//WL2K P/ in subject line – “default” can take up to a day to be received depending on traffic.
- Can’t connect with Digipeater! (move location, check antenna, power output)
- Winlink RMS server/computer (AE6EQ-7) fails to connect or immediately disconnects! (Problem at EOC)
- P2P not selected in New Message for P2P exchange